



HOUSE AND LAND PACKAGE

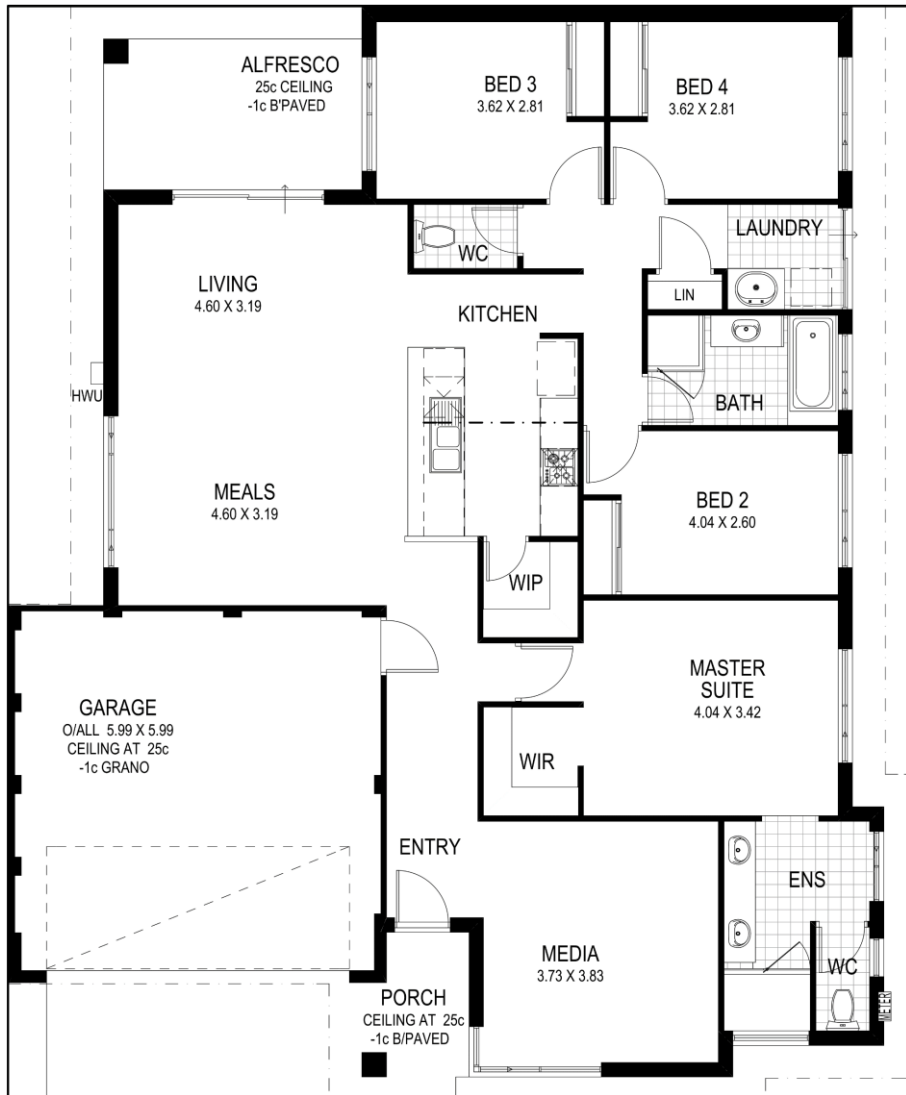
THE Octave

4 2 2

Total house area : 203.75 sqm
Fits a 15.0 wide lot

THE SPEC

- 31c Ceilings In Main Areas - 28c to Remainder
- Essastone benchtops to Kitchen, Bathroom and Ensuite
- Ducted Rev. Cycle Daikin Air Con
- Flooring, Painting, Window Coverings,
- Stylish Fisher and Paykel Appliances
- Site Works Allowance Included
- Plus lots more!



TURNKEY PACKAGE!!

From:

\$534,990*



Mark Wilson
0427 498 823

wilsonm@venturahomes.com.au

*Site costs may vary upon receipt of soil report and site survey. Ventura Homes does not own the land, nor do they claim to own the land advertised as part of this package. *Elevation pictures for illustration purposes only.